

## Instructions for use

### To read first

- The 3 plis panel is intended for indoor use only, where contact with splash water or condensation is of very short duration.
- Wood has dimensional movements (shrinkage/swelling) under the effect of humidity variations.
- In order to prevent any inconvenience, and especially to prevent the 3-ply panel from bowing, **the following recommendations must be observed.**



### 1. Storage

- Store the 3 plis wrapped panels flat on top of each other in a dry, closed room. Insulate them from the ground by laying them on battens spaced 1 meter apart and orientated in the direction of the width.
- Only remove the plastic film when applying the finish.

### 2. Finishing

- Apply the appropriate finish for the purpose before installation and assembly of the 3 plis panel, with a minimum of two coats.
- Apply an identical finish (volume of product and number of coats) to each face and edge to balance the moisture content of the 3 plis panel.

### 3. Fixing

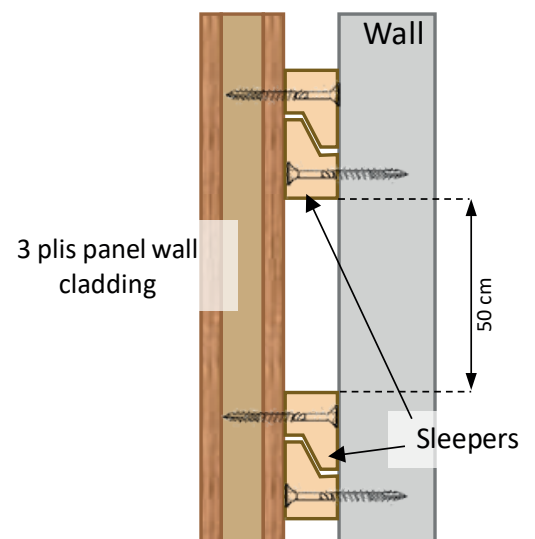
- Do not lay the 3 plis panel on a solid surface, but preferably on strips or battens.
- For wardrobe doors, if the width of use is greater than 35 cm, it is recommended that a frame be attached to the back or around the 3 plis panel.
- The following is a suggested installation for use as a wall cladding.

### 4. Use

- Depending on the use and the finish applied, provide adequate maintenance.

### Common uses :

Furniture  
Cupboard door  
Wall cladding  
Interior layout  
And many more...



This product can be sold FSC® certified on request