



DUCERF SERVICES

**A standard or specific need requires an adapted solution...
Discover our tailored services offers.**



DUCERF TAILORED SERVICES OFFERS

Technology and process know-how ...



Experts in wood

With more than 134 years of experience, the Ducerf Group now has more than 190 employees in 6 production sites.

The wood is considered as a whole, from the 1st transformation with more than 50,000 m3 of processed logs to the 2nd transformation which produces more than 14,500 m3 each year.



Customer relationship

An individual follow-up of sales in France and internationally. Quick answers to your questions and your needs from a dedicated support team.



Tools and technologies

A flexible production tool to meet specific demands.

A continuous investment policy to stay ahead in a changing market.



Service

Very high reactivity thanks to large production capacities.

An expert team in international flow management

Innovative, standard & tailored products

An R&D division at your service for collaborative development of products.



Your direct contact : [Chantal Jugnet](#)





FINGER JOINTING

Finger jointing will allow to finger joint small elements or wood falls in long lengths.

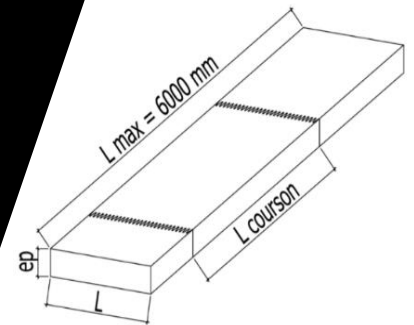
Finger-jointed on the length, this process allow to cut defects in order to get an homogen quality..

Solid wood lamellas finger-jointed are with irregulars joints in length



Contracting job:

- Length finger joint from elements from 250 mm to 950 mm in lamella 6000 mm (up to 7000 mm on special request)
- Sizes :
 - thickness from 21 mm to 90 mm
 - width up to 180 mm
- D4 or PU gluing
- joints from 11 mm to 15 mm depending on applications
- Moisture contents 12 +-2 % for standard gluing D4 up to 20 % +-2 % for PU
- Dimension tolerances before gluing - thickness +- 2/10mm - width +-30 /10 mm





Gluing

We assembly several solid or finger- jointed lamellas together in order to get a thicker size

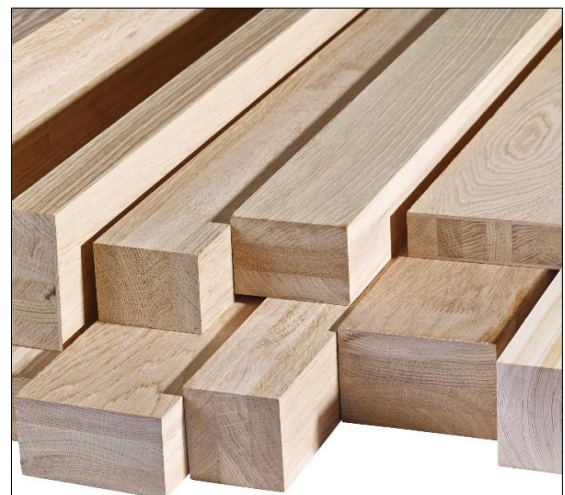
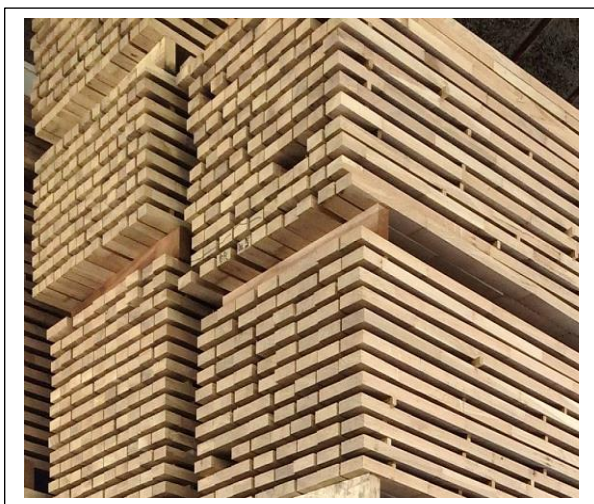
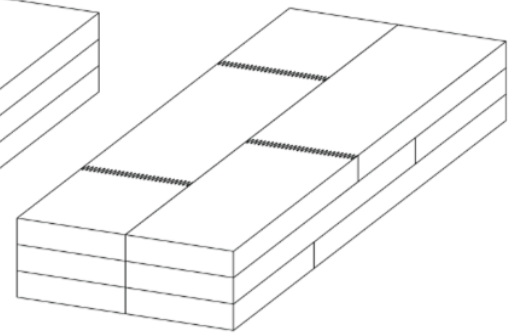
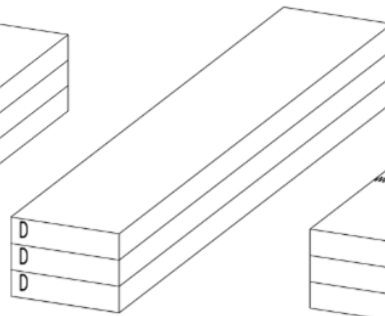
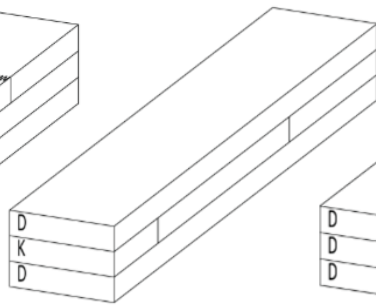
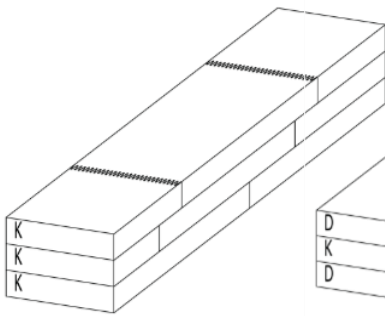
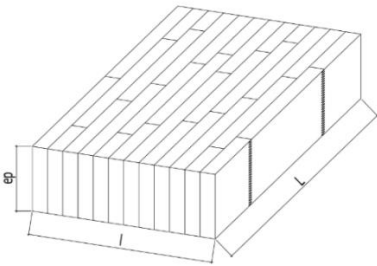
Several constructions are possible:

Solid scantlings (DDD) , mixed construction (DKD) or Finger jointed (KKK) this products will allow an optimal cost depending on final product use.

We also produce finger jointed panels , solid wood panels ...

Our offer:

- Sizes:
 - Thickness from 20 to 155 mm
 - Width from 30 to 1200 mm
 - Length from 600 to 6000 mm
- D3 or D4 gluing
- CTB LCA certification for external use (subject to specie and dimension)





DUCERF TAILORED SERVICES OFFERS PLANING and PROFILING ...

Planing - profiling - cut to accurate dimension

This process will give the final accurate form to the product.

Depending on profil request, specific tools are installed in our moulder in order to get accurate production.

We study all demands.

We can offer ends tongues and grooves on specific production (decking and cladding for example) without any break line.



Our offer:

PLANING

- 4 faces planed or profiled
- Dimension :
 - Thickness up to 120 mm
 - Width up to 230 mm
 - Length from 500 to 6000 mm

TENONING

- Specific ends tongue and groove
- Dimension :
 - Thick up to 90 mm
 - Length from 800 to 6000 mm



Glulam scantlings for joinery



Wood Decking



Wood Cladding





In 1185, Jean Ducerf built his first sawmill in Burgundy, at the very heart of one of Europe's largest forest. Generation after generation, the family-owned group grew, spread, established new sites in France, implemented innovative processes and exported to many countries, with evolving with the market.

At Ducerf, wood is considered holistically, together with all its applications.

The group carries out the first and second transformation of various hardwood species, and mostly oak timber.

Concerned about the environment, the family-owned business has adopted an ecologically responsive approach each day. A perfect way to lead by example and contribute to sustainable development. Today, Ducerf Group has become the leader in the timber industry, with very clear motivations: quality, innovation and passion.

Follow us on
Our social networks
In a click!



19 Av. Joanny Furtin
F-71120 Charolles
Commercial TEAM Export
Phone + 33 3 85 88 28 33
Fax +33 3 85 88 28 23

<https://en.ducerf.com>

**LES BOIS
PROFILES**
Ducerf Groupe